

NEW YORK STANDS WITH PUERTO RICO: POWER RESTORATION & GRID MODERNIZATION



**NY Power
Authority**

 **@GQENERGY**

ATLANTIC OCEAN

CARIBBEAN SEA



230 KV TRANSMISSION LINES

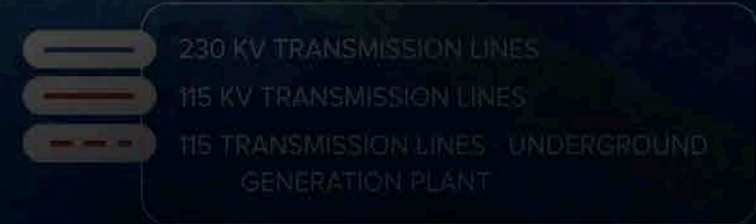
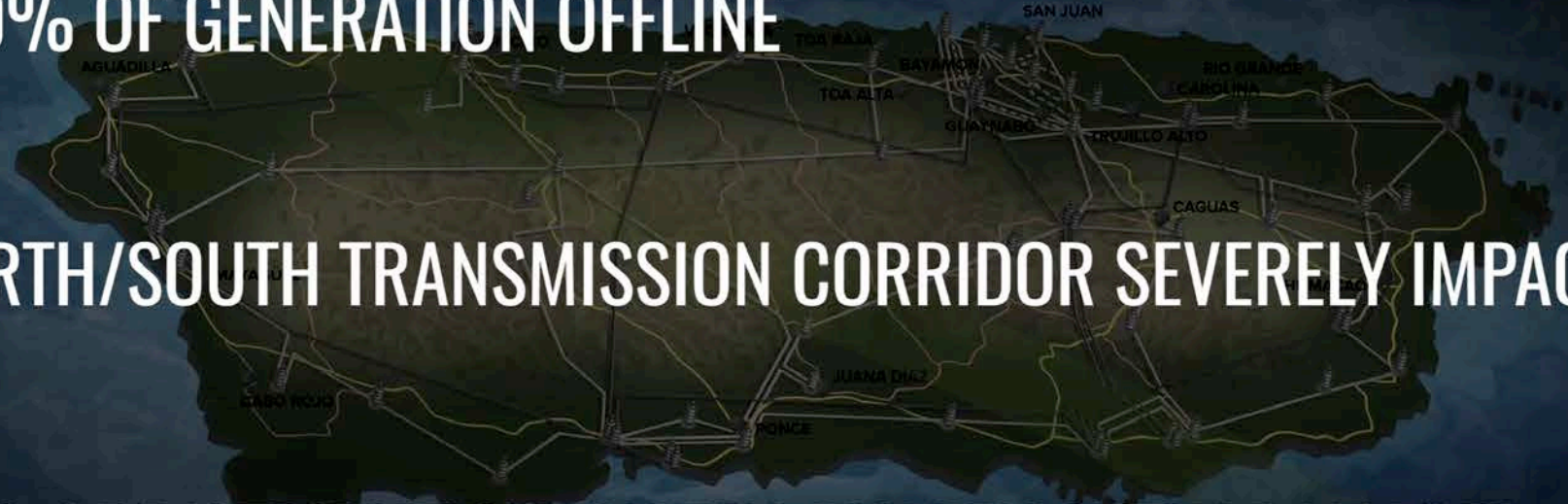
115 KV TRANSMISSION LINES

115 TRANSMISSION LINES - UNDERGROUND
GENERATION PLANT

100% OF GENERATION OFFLINE

NORTH/SOUTH TRANSMISSION CORRIDOR SEVERELY IMPACTED

75% OF DISTRIBUTION SYSTEM SIGNIFICANTLY DAMAGED







TIMELINE

DAMAGE ASSESSMENT AND
INITIAL POWER RESTORATION



REPAIR AND RESTORATION



HARDENING



REIMAGINING THE GRID





DAMAGE ASSESSMENT AND INITIAL POWER RESTORATION



BEGAN INSTALLING
EMERGENCY GENERATORS

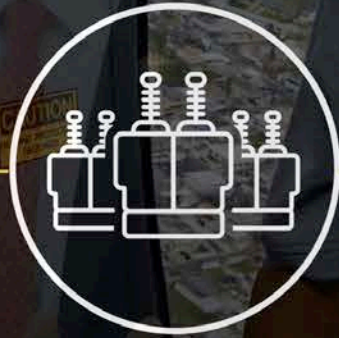




NY Power Authority



20 NYPA EXPERTS AND 2 DEC DRONE PILOTS ARRIVE



INSPECTED 346 SUBSTATIONS



INSPECTED 10 POWER PLANTS



SURVEYED TRANSMISSION LINES



NY stands with Puerto Rico



NEW YORK UTILITIES RESPOND



REQUEST FOR MUTUAL AID



ACTIVATE EMERGENCY MANAGEMENT ASSISTANCE COMPACT (EMAC)



NEW YORK UTILITIES BEGIN RESTORATION

NY Stands with Puerto Rico



NEW YORK DELEGATION IN SAN JUAN



450 UTILITY WORKERS



NEW YORK DELEGATION IN SAN JUAN



350 TRUCKS

**RESTORATION COMPLETE ON MARCH 5
SAN JUAN**



- INCIDENT COMMAND ESTABLISHED
- 7 REGIONS CREATED



BUILD BACK BETTER RECOMMENDATIONS

“HARDENING”



“REIMAGINING THE GRID”



COMPILED BY THE PUERTO RICO ENERGY RESILIENCY WORKING GROUP



NY Power Authority



NAVIGANT

BROOKHAVEN NATIONAL LABORATORY

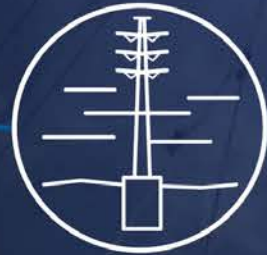


Pacific Northwest NATIONAL LABORATORY





“HARDENING”



ADOPT T&D DESIGN BASIS TO WITHSTAND
CATEGORY 4 STORMS



REINFORCE SUBSTATIONS, POLES, AND WIRES



ADOPTION OF DOE STANDARDS ON HARDENING
AND RESILIENCY



“REIMAGINING THE GRID”



UPDATE INTEGRATED
RESOURCE PLAN



DEPLOY MODERN CONTROL
SYSTEMS AND ADVANCED SENSORS



ADVANCED METERING
INFRASTRUCTURE



DISTRIBUTED ENERGY
RESOURCES



ATLANTIC OCEAN



THANK YOU TO ALL OF OUR PARTNERS AND THE BRAVE PEOPLE OF PUERTO RICO

CARIBBEAN SEA

